

Simply Formidable

Exceedingly versatile, incredibly durable, and sophisticated as scrubs can get.



360°
STRETCH



MOISTURE
WICKING



EASY
CARE

On models:
Left: **CK841** Round Neck Top and
CK090 Mid Rise Drawstring
Pant in Black (BLK), **NEW!** Infinity
Drift Textile Reflect Black (TERL),
Right: **CK840** V-Neck Top and **CK091**
Mid Rise Pull-on Pant in Black (BLK),
NEW! Infinity Fly Asphalt Black Camo
(ASBC)



CK840
V-Neck Top
XXS-3XL (26")

Fabric
86 Nylon/
14 Spandex Knit

Product Details

- Contemporary fit
- Two welt pockets
- Shirttail hem
- Power mesh trim on neck band and sleeves
- Back princess seams

Available Colors



* XS-3XL



CK841
Round Neck Top
XXS-3XL (26")

Fabric
86 Nylon/
14 Spandex Knit

Product Details

- Contemporary fit
- Two welt pockets
- Power mesh inset at center neck, collar, sleeves and side hem
- Back princess seams
- Shirttail hem
- Side vents

Available Colors



* XS-3XL



CK842
Asymmetrical Zip Front Tunic
XXS-3XL (28½")

Fabric
86 Nylon/
14 Spandex Knit

Product Details

- Contemporary fit
- Two angled welt pockets
- Power mesh inset on shoulders and sleeves
- Shirttail hem
- Front and back princess seams
- Side vents

Available Colors



Open zipper detail



Closed zipper detail



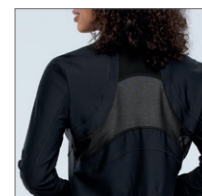
CK390
Zip Front Jacket
XXS-3XL (26")

Fabric
86 Nylon/
14 Spandex Knit

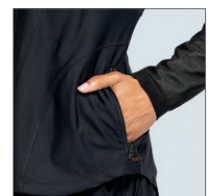
Product Details

- Contemporary fit
- Two side zipper pockets
- Power mesh insets on sleeves
- Power mesh racerback panel
- Shirttail hem

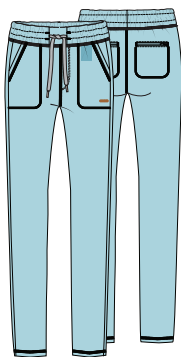
Available Colors



Mesh racerback panel



Pocket detail



CK090/P/T Mid Rise Drawstring Pant

XXS-3XL (29")
[P] XXS-2XL (26½")
[T] XS-2XL (32")

Fabric
 86 Nylon/
 14 Spandex Knit

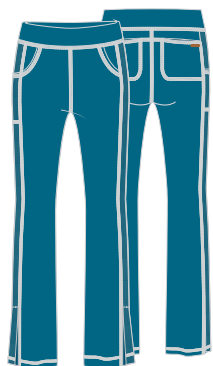
Product Details

- Contemporary fit
- Two angled front pockets
- Two back zip pockets
- Encased elastic waistband
- Rose-gold hardware
- Tapered leg, 9½" opening

Available Colors



* XS-3XL, [P] XS-2XL, No Tall



CK091/P/T Mid Rise Pull-on Pant

XXS-3XL (31")
[P] XXS-2XL (28½")
[T] XS-2XL (34")

Fabric
 86 Nylon/14
 Spandex Knit

Product Details

- Contemporary fit
- Two rounded front pockets
- Two back pockets
- Encased elastic waistband
- Power mesh side panels
- Side vents with moderate flare leg, 19" opening

Available Colors



* XS-3XL, [P] XS-2XL, No Tall



Mesh side panel



Side vent

MEN'S STYLES



CK885 Men's V-Neck Top

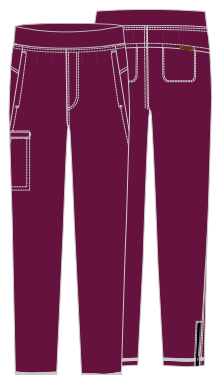
XS-3XL (28½")

Fabric
 86 Nylon/14
 Spandex Knit

Product Details

- Men's fit
- One chest pocket
- Underarm power mesh panels
- Hidden power mesh inset at back yoke

Available Colors



CK185/S/T Men's Pull-on Cargo Pant

XS-3XL (31")
[S] XS-3XL (28½")
[T] S-2XL (34")

Fabric
 86 Nylon/14
 Spandex Knit

Product Details

- Men's fit
- Encased elastic waistband
- Mock fly front closure
- Five pockets: slash pockets, back pockets, zipper cargo pocket
- Side zip vents
- Tapered leg, 14½" opening

Available Colors



* [S] XS-2XL, No Tall

COLOR and STYLE MATRIX

Colors and styles listed in
order of popularity.

Styles and colors featured
are reorderable and
Nylon/Spandex Knit.

Center back lengths
and inseams are listed
in parentheses.

CK840 V-Neck Top	CK841 Round Neck Top	CK390 Zip Front Jacket	CK842 Asymmetrical Zip Front Tunic	CK090/P/T Mid Rise Drawstring Pant	CK091/P/T Mid Rise Pull-on Pant	CK185/S/T Pull-on Cargo Pant	CK885 V-Neck Top
XXS-3XL (26")	XXS-3XL (26")	XXS-3XL (26")	XXS-3XL (28½")	XXS-3XL (29") [P] XXS-2XL (26½") [T] XS-2XL (32")	XXS-3XL (31") [P] XXS-2XL (28½") [T] XS-2XL (34")	XS-3XL (31") [S] XS-3XL (28½") [T] S-2XL (34")	XS-3XL (28½")

	WOMEN'S TOPS				WOMEN'S PANTS		MEN'S STYLES	
Black (BLK)								
Navy (NAV)								
Pewter (PWT)								
Royal (ROY)			style not available in this color	style not available in this color				
Wine (WIN)			style not available in this color	style not available in this color				
Olive Branch (OLBA)	F XS-3XL	F XS-3XL	style not available in this color	style not available in this color	F XS-3XL, [P] XS-2XL, No Tall	F XS-3XL, [P] XS-2XL, No Tall	F [S] XS-2XL, No Tall	F
Caribbean Blue (CAR)			style not available in this color	style not available in this color				
Sky Blue (SUEB)	F XS-3XL	F XS-3XL	style not available in this color	style not available in this color	F XS-3XL, [P] XS-2XL, No Tall	F XS-3XL, [P] XS-2XL, No Tall	style not available in this color	style not available in this color

F = Fashion (available while supplies last)



Fashion, Meet Function

Cutting-edge fabric technology and
sleek styling make Form fit into any
medical environment.

On models:

Left: **CK841** Round Neck Top and
CK090 Mid Rise Drawstring Pant in
Sky Blue (SUEB), Right: **CK390** Zip
Front Jacket and **CK091** Mid Rise
Pull-on Pant in Navy (NAV)