



Pushing the Boundaries

A limited-edition capsule collection that reflects the summer's hottest trends, with crossover designs that look cool at work and beyond.



FOUR-WAY STRETCH



CERTAINTY®
TECHNOLOGIES



MOISTURE WICKING

On models:

Left: **CK925A** V-Neck Top in Pink Tonic (PKTO),
CK225A Mid Rise Jogger in Heather Navy (HTNA),
Infinity Fly Pewter/Powder Pink (PWPK) Right:
CK925A V-Neck Top in Hint of Mint (HTMN),
CK225A Mid Rise Jogger in Heather Charcoal
(HTCH), Infinity Flow White (WHT)




CK925A NEW STYLE

V-Neck Top
XS-3XL (26")
Fabric

 95 Poly/5 Spandex
Heathered Poplin

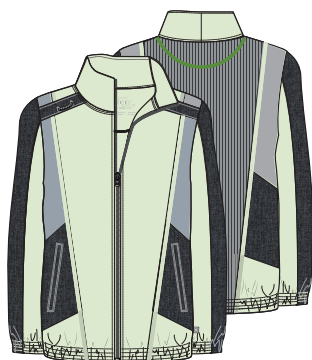
Product Details

- Contemporary fit
- Three pockets: patch pockets, zipper pocket
- Rib knit inset at neckline, under sleeves and back panel
- Bungee ID badge loop
- Side vents

Available Colors

 Zippered side pocket
and side vents


Patch pockets


CK325A NEW STYLE

Bomber Style Jacket
XS-3XL (27")
Fabric

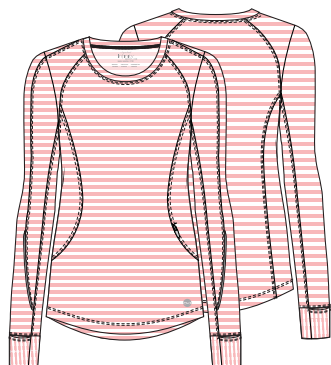
 95 Poly/5 Spandex
Heathered Poplin

Product Details

- Contemporary fit
- Zip front closure
- Two welt pockets
- Center back rib knit panel
- Bungee instrument loop on right shoulder
- Elastic at sleeve cuff and bottom hem

Available Colors

 Color block side
panels and sleeves

 Color block details with
contrast stitching

CK765 NEW COLORS

Long Sleeve Underscrub Knit Tee
XS-2XL (25½")
Fabric

 89 Poly/11 Spandex
Stripe Jersey

Product Details

- Contemporary fit
- Three pockets: hidden sleeve cuff pockets, zippered inseam pocket
- Front and back princess seams
- Reflective piping at forearms
- Rounded high-low hemline

Available Color

New Colors

 Hidden sleeve cuff
pocket


Zipper pocket


CK225A/P NEW STYLE

Mid Rise Jogger
XS-3XL (28½")
[P] XS-3XL (26")

Fabric

 95 Poly/5 Spandex
Heathered Poplin

Product Details

- Contemporary fit
- Four pockets: zip front, back
- Knit waistband with exposed soft logo elastic
- Adjustable cuffs with side zippers, 9" opening

Available Colors

 Side zip elastic
cuff

 Zippered side
pocket

Style for Days

Endless comfort and chic designs for the modern health care professional.



FOUR-WAY
STRETCH



CERTAINTY®
TECHNOLOGIES



MOISTURE
WICKING



2624A NEW COLORS

Round Neck Top

XXS-5XL (26")

Fabric

95 Poly/
5 Spandex Poplin

Product Details

- Contemporary fit
- Three pockets: patch pockets, interior pocket
- Rib knit inset at front neckband and back panel
- Bungee ID badge loop
- Shoulder yokes
- Side vents

Available Colors

BAPS	CAPS	CIPS	CPPS	EGG
ESPS*	GAB	GRP	GRY	HNPS
KAK	NYPS	OLPS	PANY*	PWPS
RED	RYPs	STAL*	TLPS	TRQ
WNPS	WTPS			

New Colors



* XS-3XL

On models: *Left:* 2624A Round Neck Top and 1123A Low Rise Drawstring Pant in Hint of Mint (HTMN), **NEW!** Infinity Rush (leather) Clean Sheen White (CLSW), *Right:* 2624A Round Neck Top and 1123A Low Rise Drawstring Pant in Pink Tonic (PKTO), Infinity Rush (leather) White (WWW/WHZ). Available in wide.



2625A
Mock Wrap Top
XXS-5XL (26")

Fabric
95 Poly/
5 Spandex Poplin

Product Details

- Contemporary fit
- Four pockets: interior, instrument, and two set-in front pockets
- Logo O-ring
- Princess seams
- Rib knit back panel
- Side vents

Available Colors



* XS-3XL



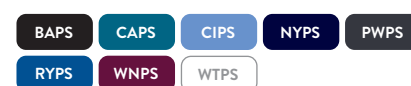
CK865A **NEW COLOR**
V-Neck Top
XXS-5XL (26")

Fabric
95 Poly/
5 Spandex Poplin

Product Details

- Contemporary fit
- Two patch pockets, left pocket with pencil stitch
- Rib knit inset at neckline
- Shirttail hem
- Logo O-ring
- Side vents

Available Colors



New Color



CK623A
V-Neck Top
XXS-5XL (26")

Fabric
95 Poly/
5 Spandex Poplin

Product Details

- Contemporary fit
- Patch pockets, interior pocket
- Rib knit waist inset and back panel
- Bungee ID badge loop
- Shirttail hem
- Side vents

Available Colors



CK810A
Zip Front V-Neck Top
XXS-3XL (26")

Fabric
95 Poly/
5 Spandex Poplin

Product Details

- Contemporary fit
- Four pockets: welt pockets, inseam pockets
- Rib knit inset at neckline
- Rib knit back panel and cuffs
- Bungee ID badge loop
- Shirttail hem
- Side vents

Available Colors



Inseam pocket



2626A

Long Sleeve Underscrub Knit Tee

XS-2XL (27")

Fabric

95 Rayon/
5 Spandex Knit

Product Details

- Contemporary fit
- Crew neck
- Long sleeves with thumbholes
- Stylized back yoke
- Flatlock seam detail

Available Colors



2391A

Zip Front Jacket

XXS-5XL (26")

Fabric

95 Poly/
5 Spandex Poplin

Eggplant: 96 Poly/
4 Spandex Poplin

Product Details

- Contemporary fit
- Hidden front zipper pockets
- Front and back shoulder yokes
- Front princess seams with flat piping
- Rib knit collar, cuffs, waistband and back panel
- Coverstitch detail

Available Colors



CK370A

Zip Front Jacket

XXS-5XL (27")

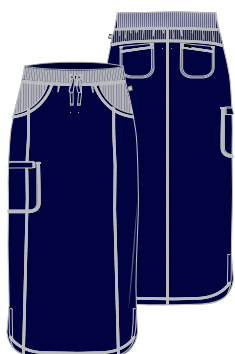
Fabric

95 Poly/
5 Spandex Poplin

Product Details

- Contemporary fit
- Interior pocket, inseam pockets
- Shoulder yokes
- Bungee ID badge loop
- Logo O-ring
- Rib knit collar and cuffs

Available Colors



CK505A

30" Drawstring Skirt

XXS-3XL (30")

Fabric

95 Poly/
5 Spandex Poplin

Product Details

- Contemporary fit
- Five pockets: set-in pockets, back patch pockets, welt cargo pocket
- Elastic rib knit waistband with drawstring
- Rib knit front and back yokes
- Coverstitch detail

Available Colors





CK952A
Zip Front Tunic
XXS-3XL (30½")

Fabric
95 Poly/
5 Spandex Poplin

Product Details

- Contemporary fit
- Three pockets: two welt pockets, interior zipper pocket
- Zip front closure
- Knit back panel
- Rib knit inset at neckline
- Deep side vents
- Logo zipper pull, charm and ID badge loop

Available Colors

BAPS WTPS



1401A
40" Lab Coat
XXS-3XL (40")

Fabric
95 Poly/
5 Spandex Poplin

Product Details

- Contemporary fit
- Hidden button closure
- Front welt pockets
- Button-cuff roll-up sleeves with button tabs
- Back princess seams
- High-low shirttail hem
- Pointed shirt collar

Available Colors

BAPS* WTPS

*XS-3XL



Welt pocket



Sleeve with button tab



CK510A
39" Button Front Dress
XXS-3XL (39")

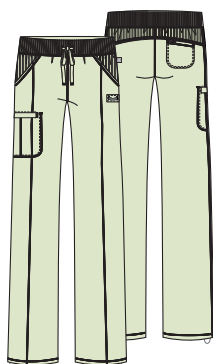
Fabric
95 Poly/
5 Spandex Poplin

Product Details

- Contemporary fit
- Two welt pockets
- Front and back princess seams
- Set-in waistband
- Rib knit back panel
- Bungee ID badge loop
- Instrument loop
- Coverstitch detail

Available Colors

BAPS WTPS



1123A/P/T **NEW COLORS**
Low Rise Drawstring Pant
XXS-5XL (31")
[P] XXS-2XL (28½")
[T] XS-2XL (34")

Fabric
95 Poly/
5 Spandex Poplin

Product Details

- Contemporary fit
- Four pockets: slash pockets, cargo pocket, back pocket
- Elastic rib knit waistband
- Adjustable toggle hems
- Rib knit front and back yokes
- Straight leg, 18" opening (18½" for tall)

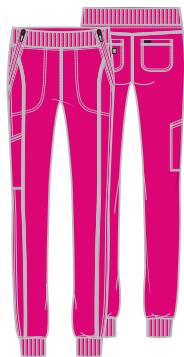
Available Colors



New Colors



*XS-3XL, [P] XS-2XL, No Tall



CK110A/P/T **NEW COLORS**

Mid Rise Jogger Pant

XXS-5XL (28")
[P] XXS-2XL (25½")
[T] XS-2XL (31")

Fabric
95 Poly/
5 Spandex Poplin

Product Details

- Contemporary fit
- Cargo pocket with reflective tape, angled zipper pockets, back pockets
- Elastic rib knit waistband and leg bands
- Tapered leg, 12½" opening

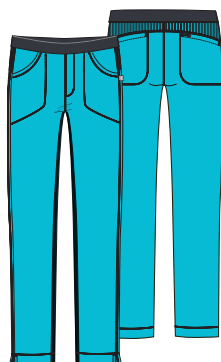
Available Colors



New Colors



*No Tall



1124A/P/T

Low Rise Slim Pull-on Pant

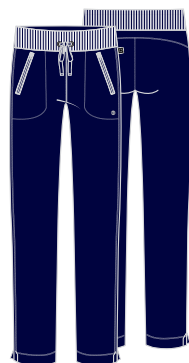
XXS-5XL (31")
[P] XXS-2XL (28½")
[T] XS-2XL (34")

Fabric
95 Poly/
5 Spandex Poplin

Product Details

- Contemporary fit
- Patch and back pockets
- Elastic waistband
- Rib knit back yoke and inseam inset
- Coverstitch detail
- Side vents
- Slim straight leg, 17" opening

Available Colors



CK100A/P/T

Mid Rise Drawstring Pant

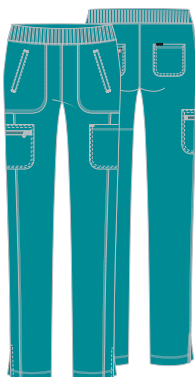
XXS-5XL (30½")
[P] XXS-2XL (28")
[T] XS-2XL (33½")

Fabric
95 Poly/
5 Spandex Poplin

Product Details

- Contemporary fit
- Slash zip pockets
- Elastic rib knit waistband
- Back yoke
- Side vents
- Tapered leg, 16" opening

Available Colors



CK065A/P/T **NEW COLOR**

Mid Rise Pull-on Pant

XXS-5XL (30½")
[P] XXS-2XL (28")
[T] XS-2XL (33½")

Fabric
95 Poly/
5 Spandex Poplin

Product Details

- Contemporary fit
- Six pockets: cargo pockets, welt pockets, back pockets
- Rib knit waistband
- Side vents
- Tapered leg, 14" opening

Available Colors



New Color



MEN'S STYLES



CK825A Men's Polo

XS-5XL (29½")

Fabric
95 Poly/5
Spandex Poplin
Contrast knit:
96 Poly/4 Spandex

Product Details

- Men's fit
- Zip chest pocket
- Rib knit back side panels
- Button placket
- Decorative heat transfer

Available Colors

BAPS NYPS PWPS



CK900A Men's V-Neck Top

XS-5XL (29½")

Fabric
95 Poly/
5 Spandex Poplin

Product Details

- Men's fit
- Three pockets: welt pockets, chest pocket with grommet detail
- Rib knit back side panels
- Front and back yokes

Available Colors

BAPS CAPS CIPS EGG GAB
GRY HNPS KAK NYPS OLPS
PWPS RED RYPS TLPS WNPS
WTPS



CK910A Men's V-Neck Top

XS-5XL (29½")

Fabric
95 Poly/
5 Spandex Poplin

Product Details

- Men's fit
- Two pockets: chest pocket with additional zip close pocket
- Rib knit neckband and back side panels
- Triple-needle topstitching
- Front and back yokes

Available Colors

BAPS CAPS CIPS HNPS NYPS
OLPS PWPS RYPS TLPS WNPS



CK650A Men's Underscrub Knit Top

XS-2XL (29")

Fabric
95 Rayon/
5 Spandex Knit

Product Details

- Men's fit
- Crew neck
- Long sleeves
- Shoulder yokes
- Front seam detail

Available Colors

BAPS PWPS

Infinity

by CHEROKEE
UNIFORMS



CK305A

Men's Zip Front Jacket

XS-5XL (28")

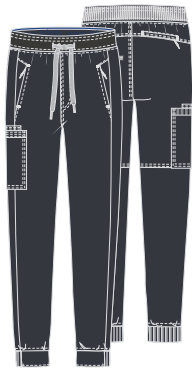
Fabric

95 Poly/5 Spandex Poplin

Product Details

- Men's fit
- Four pockets: patch pockets, sleeve pocket, chest pocket with additional zippered pocket
- Zip front closure
- Logo zipper pull
- Rib knit collar, cuffs, waistband and back side panels
- Instrument loop
- Shown in Caribbean Blue (CAPS)

Available Colors



CK004A/S/T

Men's Jogger Pant

XS-5XL (31")

[S] XS-3XL (28½")

[T] S-2XL (34")

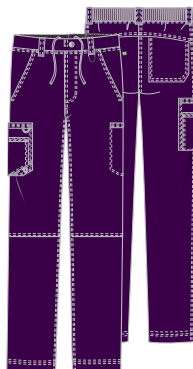
Fabric

95 Poly/
5 Spandex Poplin

Product Details

- Men's fit
- Rib knit covered waistband with drawstring
- Mock fly front closure
- Five pockets: zippered slash pockets, cargo pocket with cellphone pocket, hidden zippered back pocket
- Rib knit on back of cuffs at leg opening
- Tapered leg, 10½" opening

Available Colors



CK200A/S/T

Men's Fly Front Cargo Pant

XS-5XL (32")

[S] XS-3XL (29½")

[T] S-2XL (35")

Fabric

95 Poly/
5 Spandex Poplin

Product Details

- Men's fit
- Back elastic waistband with rib knit
- Zip fly with button closure and inside drawstring
- Six pockets: front slash pockets, welt cargo pocket on left, layered cargo pockets with bungee and grommet on right, back patch pocket
- Knee seams
- Five belt loops
- Tapered leg, 18" opening

Available Colors



COLOR and STYLE MATRIX

Colors and styles listed in order of popularity.

Styles and colors featured are reorderable and Poly/Spandex Poplin, unless otherwise noted.

Center back lengths and inseams are listed in parentheses.

2624A Round Neck Top	2625A Mock Wrap Top	2391A Zip Front Jacket	CK623A V-Neck Top	2626A Long Sleeve Underscrub Knit Tee	CK865A V-Neck Top	CK370A Zip Front Jacket	CK810A Zip Front V-Neck Top
XXS-5XL (26")	XXS-5XL (26")	XXS-5XL (26")	XXS-5XL (26")	XS-2XL (27")	XXS-5XL (26")	XXS-5XL (27")	XXS-3XL (26")

	WOMEN'S TOPS							
Black (BAPS)					[Rayon/Spandex Knit]			
Navy (NYPS)					[Rayon/Spandex Knit]			
Pewter (PWPS)					[Rayon/Spandex Knit]			
Royal (RYPS)					style not available in this color		style not available in this color	style not available in this color
Wine (WNPS)				style not available in this color	[Rayon/Spandex Knit]		style not available in this color	style not available in this color
Ciel (CIPS)					[Rayon/Spandex Knit]		style not available in this color	style not available in this color
Caribbean Blue (CAPS)				style not available in this color	[Rayon/Spandex Knit]		style not available in this color	style not available in this color
White (WTPS)					[Rayon/Spandex Knit]		style not available in this color	
Hunter Green (HNPS)				style not available in this color	style not available in this color	style not available in this color	style not available in this color	style not available in this color
Teal Blue (TLPS)				style not available in this color	style not available in this color	NEW	style not available in this color	style not available in this color
Galaxy Blue (GAB)				style not available in this color		style not available in this color	style not available in this color	style not available in this color
Eggplant (EGG)				style not available in this color	style not available in this color	style not available in this color	style not available in this color	style not available in this color
Red (RED)				style not available in this color	style not available in this color	style not available in this color	style not available in this color	style not available in this color
Olive (OLPS)				style not available in this color	style not available in this color	style not available in this color	style not available in this color	style not available in this color
Grey (GRY)			style not available in this color	style not available in this color	style not available in this color	style not available in this color	style not available in this color	style not available in this color
Carmine Pink (CPPS)				style not available in this color	[Rayon/Spandex Knit]	style not available in this color	style not available in this color	style not available in this color
Turquoise (TRQ)			style not available in this color	style not available in this color	style not available in this color	style not available in this color	style not available in this color	style not available in this color
Grape (GRP)				style not available in this color	style not available in this color	style not available in this color	style not available in this color	style not available in this color
Khaki (KAK)				style not available in this color	style not available in this color	style not available in this color	style not available in this color	style not available in this color
Espresso (ESPS)	XS-3XL	style not available in this color	style not available in this color	style not available in this color	style not available in this color	style not available in this color	style not available in this color	style not available in this color
Pastel Peony (PANY)	F XS-3XL	F XS-3XL	style not available in this color	style not available in this color	style not available in this color	style not available in this color	style not available in this color	style not available in this color
Sea Salt (STAL)	F XS-3XL	F XS-3XL	style not available in this color	style not available in this color	style not available in this color	style not available in this color	style not available in this color	style not available in this color
Hint of Mint (HTMN) NEW	F XS-3XL	style not available in this color	style not available in this color	style not available in this color	style not available in this color	style not available in this color	style not available in this color	style not available in this color
Pink Tonic (PKTO) NEW	F XS-3XL	style not available in this color	style not available in this color	style not available in this color	style not available in this color	style not available in this color	style not available in this color	style not available in this color



1123A/P/T
Low Rise
Drawstring
Pant

XXS-5XL (31")
[P] XXS-2XL (28½")
[T] XS-2XL (34")



CK110A/
P/T
Mid Rise
Jogger Pant

XXS-5XL (28")
[P] XXS-2XL
(25½")
[T] XS-2XL (31")



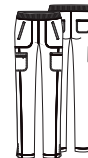
1124A/P/T
Low Rise
Slim
Pull-on Pant

XXS-5XL (31")
[P] XXS-2XL (28½")
[T] XS-2XL (34")



CK100A/P/T
Mid Rise
Drawstring
Pant

XXS-5XL (30½")
[P] XXS-2XL (28")
[T] XS-2XL (33½")



CK065A/
P/T
Mid Rise
Pull-on Pant

XXS-5XL (30½")
[P] XXS-2XL (28")
[T] XS-2XL (33½")



CK505A
30"
Drawstring
Skirt

XXS-3XL
(30")



1401A
40" Lab
Coat

XXS-3XL
(40")



 **CK510A**
39"
Button Front
Dress

XXS-3XL
(39")



CK952A
Zip Front
Tunic

XXS-3XL
(26")

[illegible]

F = Fashion (available while supplies last)

Model is wearing **CK609** Let's Fly (LETF), **CK110A** Mid Rise Jogger Pant in Black (BAPS), Infinity Rush (leather) Clean Sheen White (CLSW).

Prints Charming

Fresh, figure-flattering designs that add flair to any scrubs wardrobe.

Let's Fly (LETF) **NEW**

94 Poly/6 Spandex Poplin

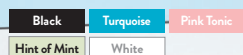


CK609

XS-3XL (26")

Contrast Trim: Black

Coordinating Colors:



Infinite Hope (INHP) **NEW**

95 Poly/5 Spandex Poplin



CK702

XS-3XL (26")

Contrast Trim: Black

Coordinating Colors:



Heart Beats (HEBA) **NEW**

94 Poly/6 Spandex Poplin



CK634

XXS-5XL (26")

Contrast Trim: Black/Hint of Mint

Coordinating Colors:



Let's Go Places (LESG) **NEW**

94 Poly/6 Spandex Poplin



CK608

XS-3XL (26")

Contrast Trim: Pewter/Pink Tonic

Coordinating Colors:



Feeling Floral (FGFL) **NEW**

95 Poly/5 Spandex Poplin



CK609

XXS-3XL (26")

Contrast Trim: Black

Coordinating Colors:



All styles featured are Fashion, unless otherwise noted, and available while supplies last.

Cheetah Spots (CASO) **NEW**

94 Poly/6 Spandex Poplin



CK656

XXS-3XL (26")

Contrast Trim: Black

Coordinating Colors:



Night Bloom (NTBO) **NEW**

94 Poly/6 Spandex Poplin



CK634

XS-3XL (26")

Contrast Trim: Black

Coordinating Colors:



Brush It (BURT) **NEW**

94 Poly/6 Spandex Poplin



CK608

XXS-5XL (26")

Contrast Trim: Navy

Coordinating Colors:



Actively In Bloom (ATVY) **NEW**

94 Poly/6 Spandex Poplin



CK609

XS-3XL (26")

Contrast Trim: Navy

Coordinating Colors:



Glowing Grid (GWGD)

94 Poly/6 Spandex Poplin



CK902 Men's

XS-5XL (29½")

Coordinating Colors:



Plaid Tie Dye (PLTY) **NEW**

94 Poly/6 Spandex Poplin



CK902 Men's

XS-5XL (29½")

Coordinating Colors:



Paint By Flutter (PABY)

95 Poly/5 Spandex Poplin



CK608
XXS-5XL (26")
Contrast Trim: Black

Coordinating Colors:

Black	Pewter	Turquoise	Carmine Pink
White			

Wild Botanic (WIBN)

94 Poly/6 Spandex Poplin



CK609
XS-3XL (26")
Contrast Trim: Black

Coordinating Colors:

Black	Pewter	Turquoise	Ciel
Carmine Pink	White		

Beautiful Blooms (BUUB)

95 Poly/5 Spandex Poplin



CK609
XS-3XL (26")
Contrast Trim: Black

Coordinating Colors:

Black	Ciel	Carmine Pink	White
-------	------	--------------	-------

Digital Daisy (DGTY)

95 Poly/5 Spandex Poplin



CK634
XXS-3XL (26")
Contrast Trim: Carmine Pink/Black

Coordinating Colors:

Black	Eggplant	Royal	Teal Blue
Sea Salt	Carmine Pink	Pastel Peony	White

Hearts In Motion (HTMT)

94 Poly/6 Spandex Poplin



CK608
XXS-5XL (26")
Contrast Trim: Black

Coordinating Colors:

Black	Grey	Ciel	Sea Salt
Carmine Pink	Pastel Peony	White	

Poppin' Polka Dots Peony (PKAD)

95 Poly/5 Spandex Poplin



CK608
XS-3XL (26")
Contrast Trim: Pewter

Coordinating Colors:

Black	Pewter	Carmine Pink	Mango Smoothie
Pastel Peony	White		

Poppin' Polka Dots Navy (PKNV)

95 Poly/5 Spandex Poplin



CK634
XXS-5XL (26")
Contrast Trim: Navy

Coordinating Colors:

Black	Navy	Teal Blue	Sea Salt
Pastel Peony	White		



CK372
XXS-5XL (26")
Contrast Trim: Navy